

SAFETY PRECAUTIONS

OPERATOR PROTECTION

WHEN USING DO NOT EAT, DRINK OR SMOKE.

ENVIRONMENTAL PROTECTION

Do not contaminate water with the product or its container. Do not clean application equipment near surface water. Avoid contamination via drains from farmyards and roads.

STORAGE AND DISPOSAL

KEEP AWAY FROM FOOD, DRINK AND ANIMAL FEEDING-STUFFS.

KEEP OUT OF REACH OF CHILDREN.

AGRICULTURAL PRACTICE

For the best results TEMSA SC should be applied when the weeds are actively growing i.e. in warm humid weather with adequate soil moisture. Treatment in poor growing conditions or in dry soil may give less reliable control. It is not recommended to spray crops suffering from stress e.g. when in very cold or drought conditions, or when wide temperature fluctuations are expected or excessive rainfall is expected to follow application. Under these adverse conditions mild to moderate chlorosis may be observed on sprayed leaves. This effect is usually transient and does not affect yield.

Do not spray when weed or crop foliage is wet.

Take extreme care to avoid drift onto dicotyledonous plants outside the target area. Take extreme care to avoid drift onto all crops outside the target area, otherwise crop damage will result.

Ensure that spray swaths are matched accurately and do not overlap.

WEED CONTROL

TEMSA SC controls Barnyard grass (*Echinochloa crus-galli*), field pansy (*Viola arvensis*), black bindweed (*Fallopia convolvulus*), cleavers (*Gallium aparine*), fat-hen (*Chenopodium album*), creeping thistle (*Cirsium arvense*).

Forage maize and grain maize may be sprayed any time from the two to eight leaf stage. TEMSA SC contains an adjuvant system and the addition of an adjuvant or a tank mix wetting agent is not recommended. The recommended dose rate is 0.75 to 1.5 litres per hectare depending on the type of weeds present and on their growth stage.

APPLICATION

Good spray cover is essential and care should be taken to ensure that the sprayer has a matched set of nozzles, the machine is correctly calibrated and adjusted to the correct height above the crop.

Apply using a medium quality spray (BCPC) at a pressure of at least 2 bar.

Apply through conventional crop spraying equipment.

PREPARATION OF THE SPRAY

Half-fill the spray tank with clean water, add the required amount of TEMSA SC and agitate while filling the tank. On emptying the container, RINSE CONTAINER THOROUGHLY by using an integrated pressure rinsing device or manually rinsing three times. Add washings to sprayer at time of filling and dispose of container safely. Continue agitation during spraying.

VOLUME OF WATER

Even cover of the weeds is essential.

Use 110 to 400 litres (maximum) of water per hectare. A typical volume of 200L is preferable, but the higher volume may be necessary where there are dense or well developed weed populations.

APPLICATION METHODS

Apply through a conventional field crop sprayer using a pressure of 2–3 bars. Ensure the sprayer is correctly calibrated before use. Do not leave spray liquid in the sprayer for long periods (i.e. overnight).

AFTER USE

It is important to wash equipment thoroughly after use to remove all traces of TEMSA SC as even small amounts

TEMSA SC

Herbicide against annual broad-leaved weeds in forage and grain maize
Suspension concentrate containing 100 g/L (9.22 % w/w) mesotrione



RISK AND SAFETY INFORMATION

May cause an allergic skin reaction.
Causes serious eye irritation.
Very toxic to aquatic life with long lasting effects.

Wear protective gloves/protective clothing/eye protection/face protection.
IF IN EYES: Rinse cautiously with water for several minutes. Remove contact lenses, if present and easy to do. Continue rinsing.
IF ON SKIN: Wash with plenty of water.
Collect spillage.

Dispose of contents/container to a licensed hazardous waste disposal contractor or collection site except for triple rinsed empty containers which can be disposed of as non-hazardous waste.

Do not contaminate water with the product or its container.
To protect aquatic organisms respect an unsprayed buffer zone of 4 m to surface water bodies.

To avoid risks to human health and the environment, comply with the instructions for use.

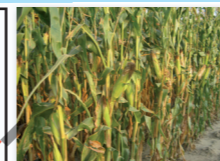
PCS no. 05305

IMPORTANT INFORMATION

FOR USE ONLY AS AN AGRICULTURAL HERBICIDE

Crop	Max. single dose	Max. number of applications	Max. total dose	Latest time of application
Forage and grain maize (open crops)	1.5 L/ha	1 per crop	1.5 L/ha	8 leaves unfolded (GS 18)

READ THE LABEL BEFORE USE. USING THIS PRODUCT IN A MANNER THAT IS INCONSISTENT WITH THE LABEL MAY BE AN OFFENCE.



FOR PROFESSIONAL USE ONLY
For 24 hour emergency information contact Globachem n.v.
Telephone: +32 11 78 57 17

Batch No: see bottle

Net contents: 5 lit. e

Registration holder and marketing company:

Globachem
Globachem nv

Brustern Industriepark
Lichtenberglaan 2019
3800 Sint-Truiden • Belgium
Tel +32 (0)11 78 57 17
Fax +32 (0)11 68 15 65
Email: globachem@globachem.com
Web: www.globachem.com

may cause damage to crops. Rinse inside of tank with clean water using at least one tenth of the spray tank volume. After flushing through pump and spray lines, drain and repeat procedure. Disposal of spray tank washings should be in accordance with local, state or national legislation.

FOLLOWING CROPS AND RECULTIVATION

RECULTIVATION

Ploughing is recommended prior to reseedling. Some slight crop effects may be seen soon after emergence, but these are usually transitory in nature. Forage and grain maize can be re-seeded immediately in case of crop failure.

ROTATIONAL CROPS

Autumn

Winter wheat (including durum wheat), winter barley and ryegrass can follow a forage maize and grain maize crop treated with TEMSA SC. Deep ploughing (greater than 15 cm) followed by cultivation is necessary before drilling oilseed rape.

Spring

Forage maize and grain maize, ryegrass, spring wheat and spring barley may be sown in the spring following application of TEMSA SC, do not sow any other crop at this time.

RESISTANCE MANAGEMENT

TEMSA SC is a 4-HPPD inhibitor, disrupting development of plant pigments which are essential for photosynthesis. This inhibition causes leaf chlorosis and eventual death of sensitive weed species. It's mode of action is different from other herbicide groups, and there is no known cross resistance in weeds which exhibit reduced sensitivity to other herbicides. Weed control may be reduced if strains of individual species less sensitive to TEMSA SC develop.

The use of TEMSA SC in programmes or tank mixtures with a broad-leaved weed herbicide possessing a dif-

ferent mode of action will reduce the likelihood of resistance developing in broad-leaved weeds e.g. Fat hen, Black nightshade, Common amaranth. At the present time there is no similar mode of action in herbicides for crops other than forage maize and grain maize and therefore crop rotation will also delay the onset of any resistance.

COMPATIBILITY

In case of tank mixes with trace elements, it is recommended that TEMSA SC is added first to the tank with constant agitation and the mixture is sprayed without delay.

The user should ensure that all products to be tank mixed with TEMSA SC are approved for use on the crops which are to be sprayed. Always refer to other manufacturers' product information when mixing to ensure correct product use. Each product should be added separately to the bulk of the water in the spray tank and thoroughly mixed before adding the next chemical. Always use constant agitation of the sprayer tank during mixing, transportation and application. Spray immediately.

CONDITIONS OF SUPPLY

All goods supplied by us are of high grade and we believe them to be suitable but, as we cannot exercise control over their storage, handling, mixing or use, or the weather conditions before, during or after application which may affect the performance of the goods, all conditions and warranties, statutory or otherwise, as to the quality or fitness for any purpose of our goods are excluded. No responsibility will be accepted by us or re-sellers for any failure in performance, damage or injury whatsoever arising from their storage, handling, application or use. These conditions cannot be varied by our staff or agents whether or not they supervise or assist in the use of such goods.